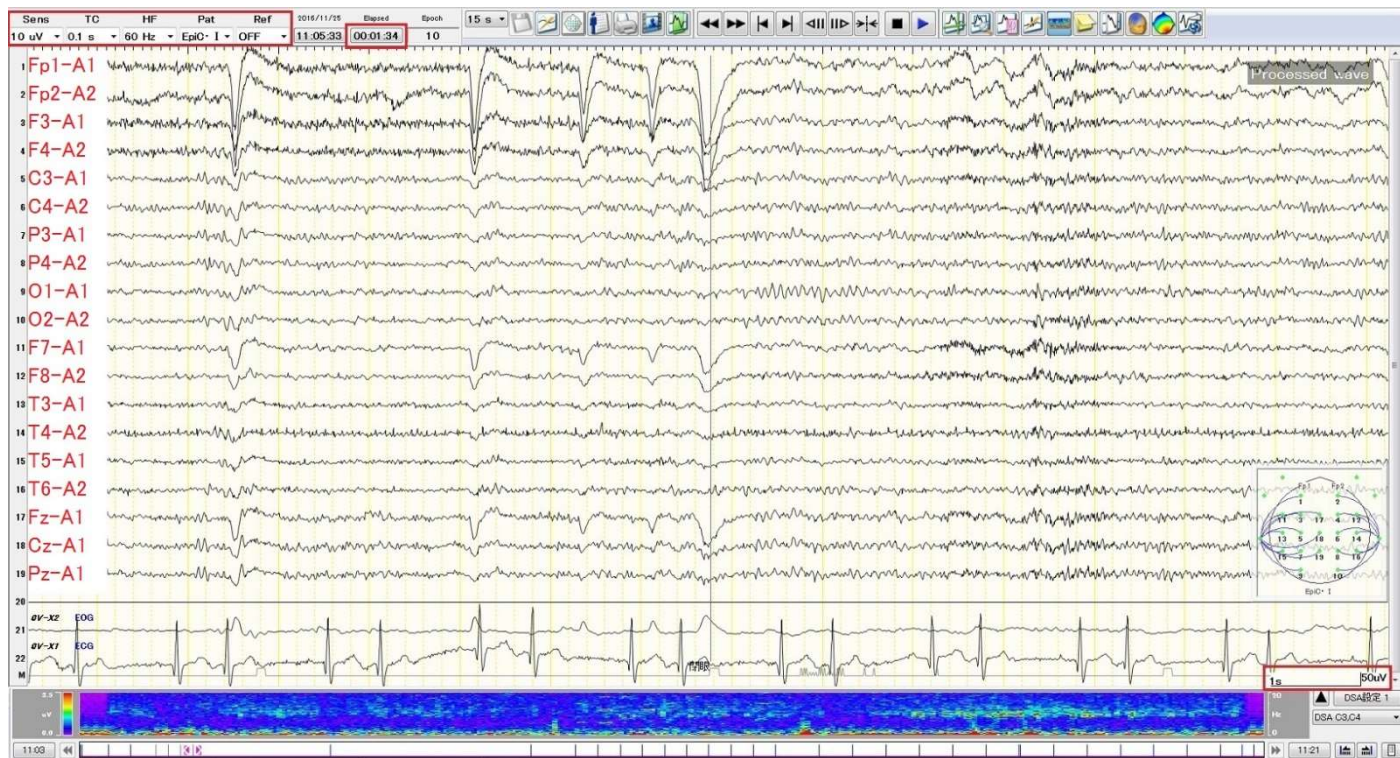
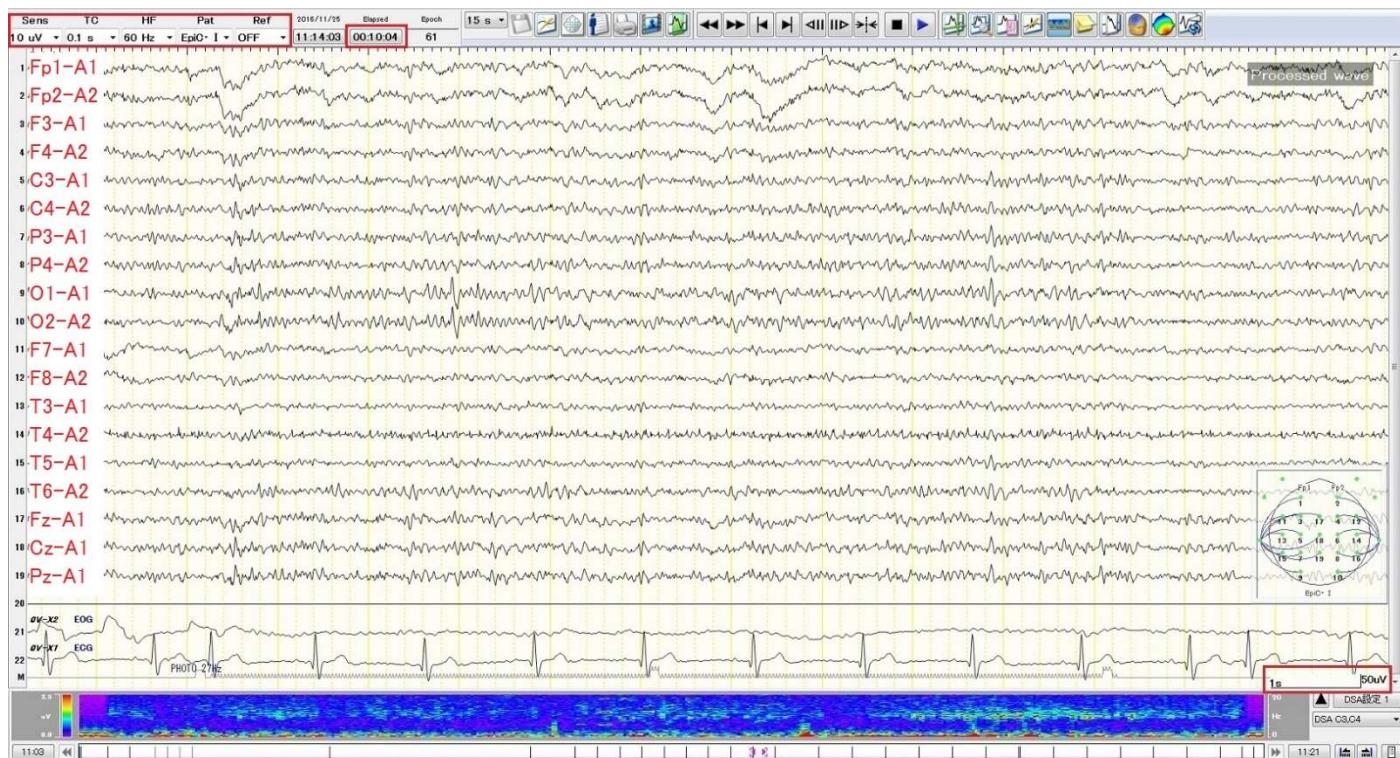


# 神經生理検査

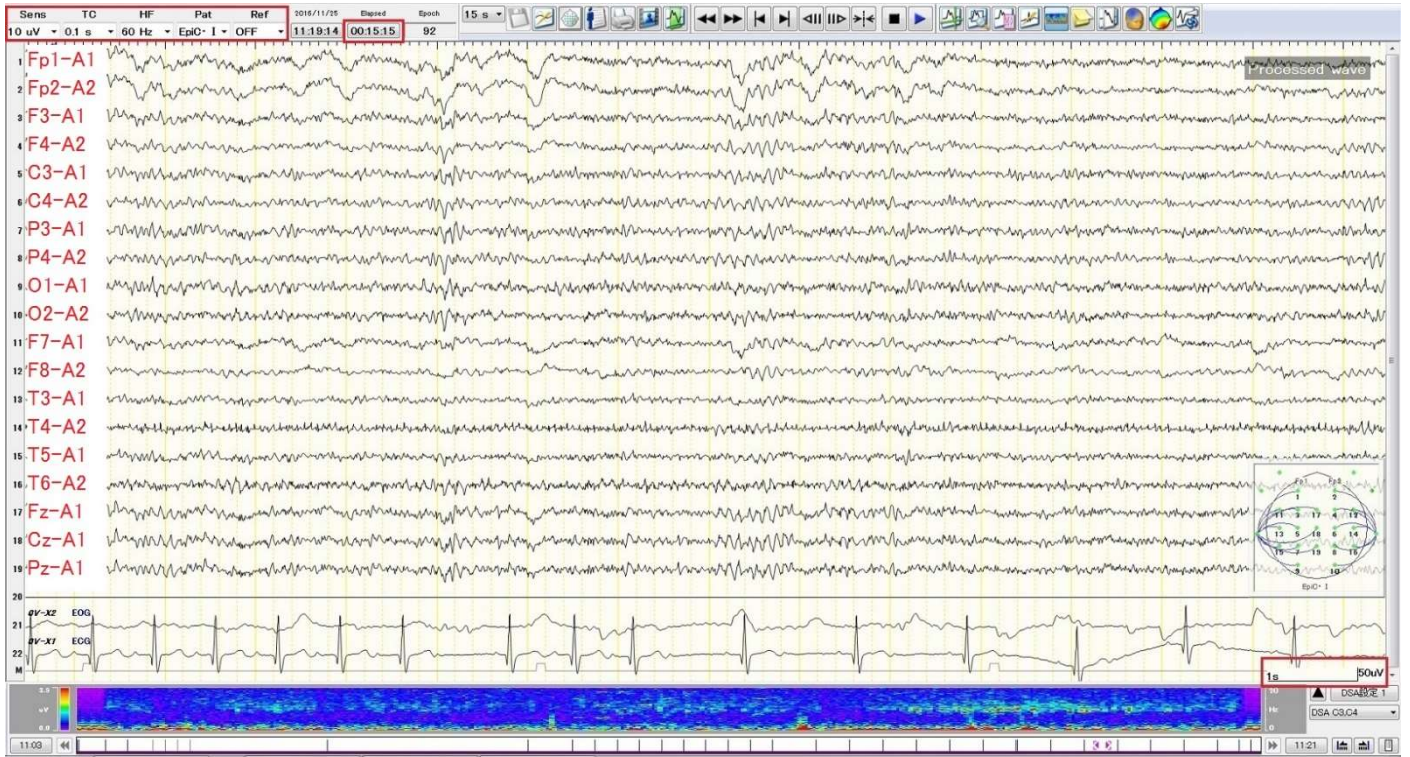
## 設問1.



1分30秒後：(耳朵)基準電極導出

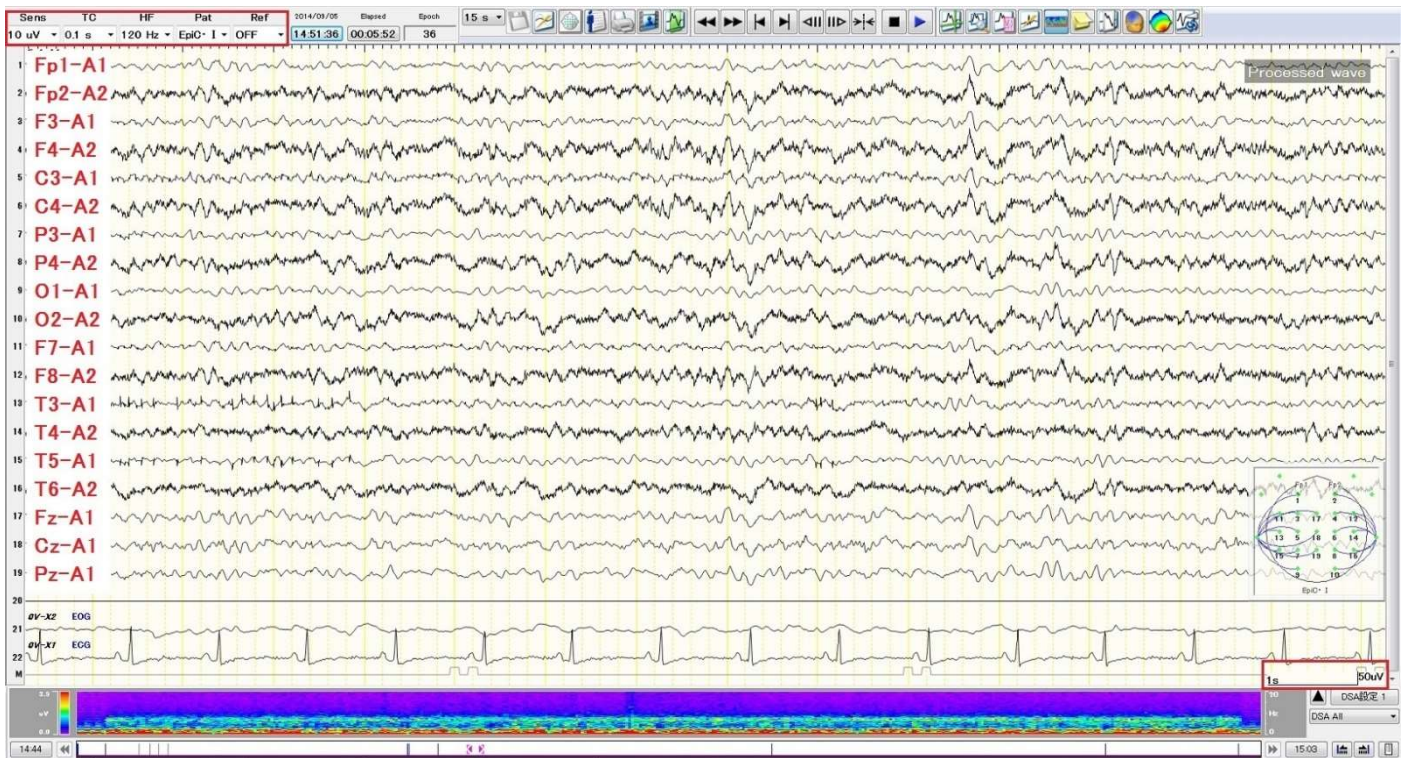


10分後：(耳朵)基準電極導出

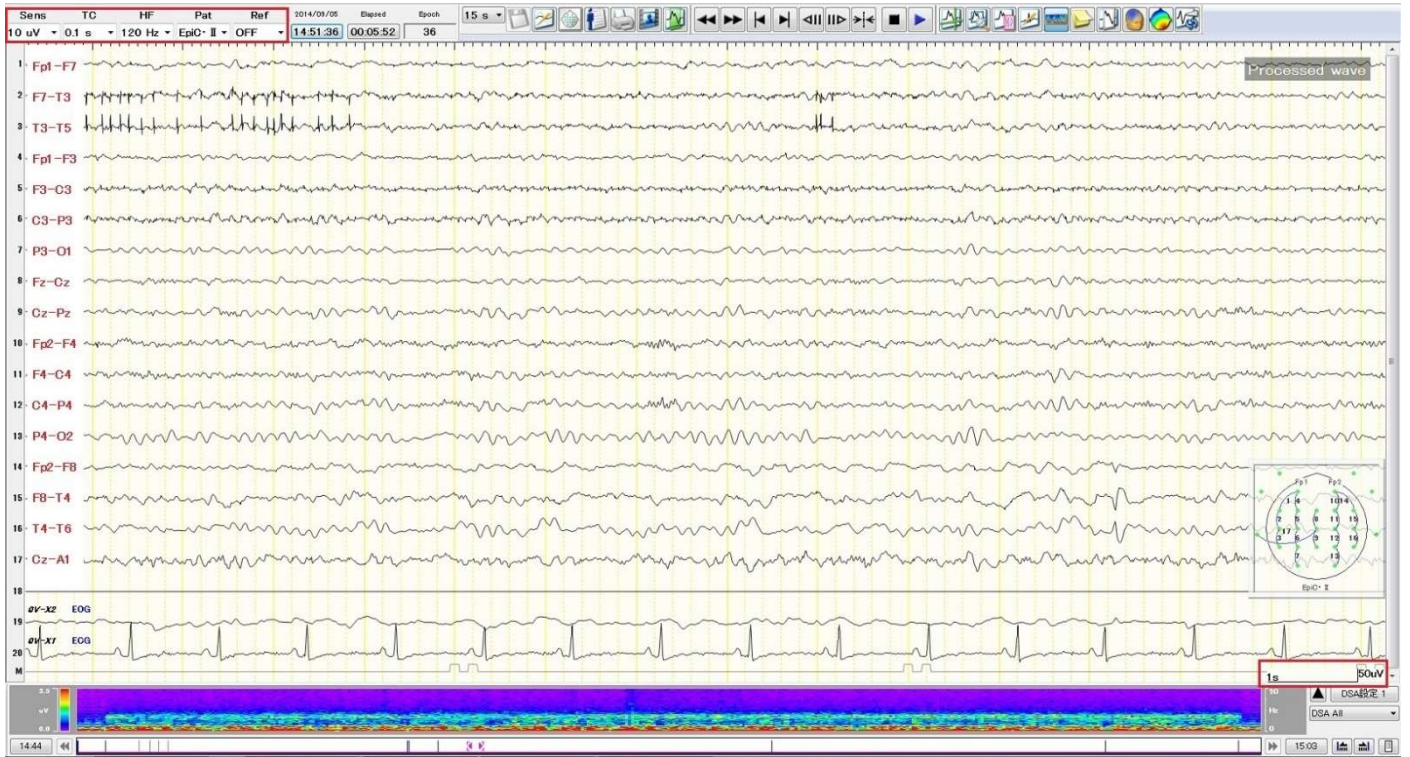


15分後：(耳朵)基準電極導出

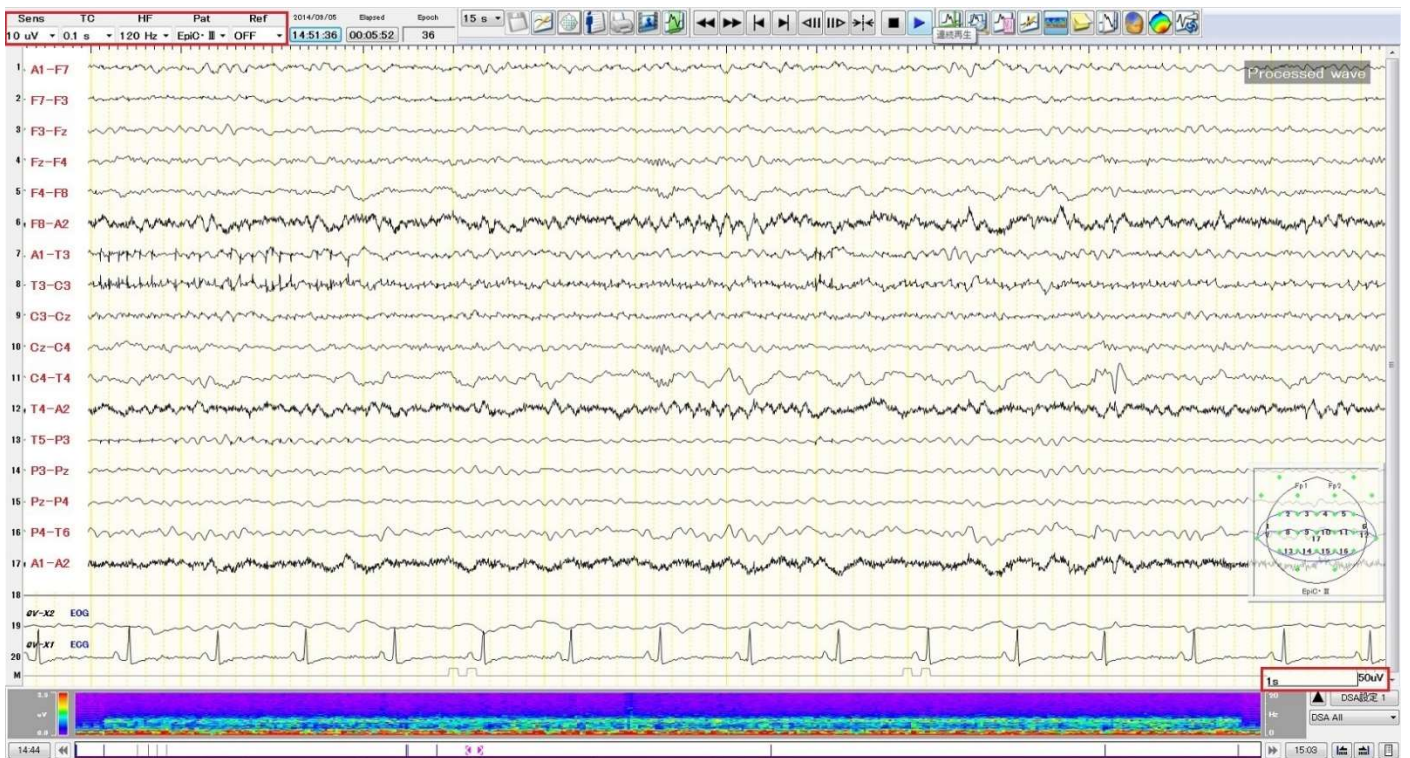
## 設問2.



(耳朵)基準電極導出



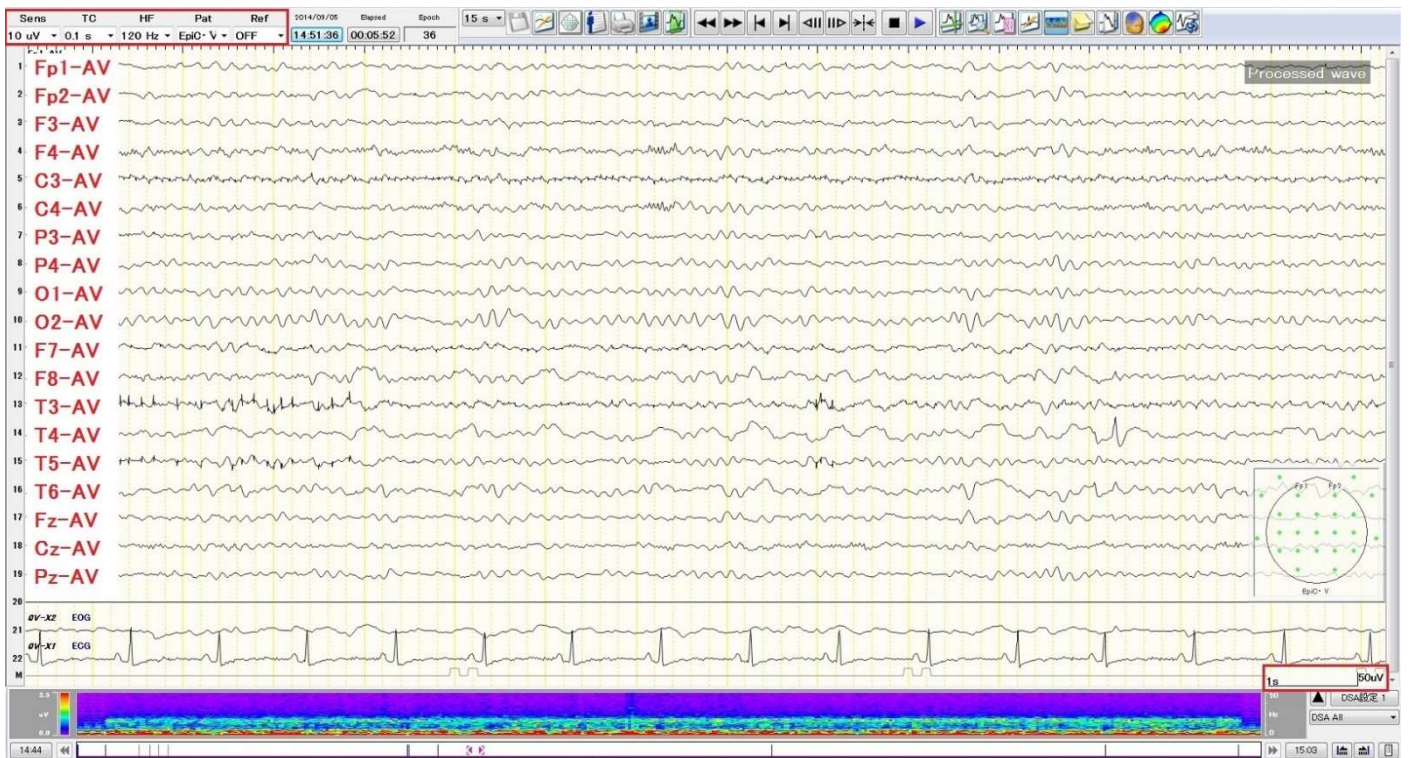
双極導出(縦)



双極導出(横)

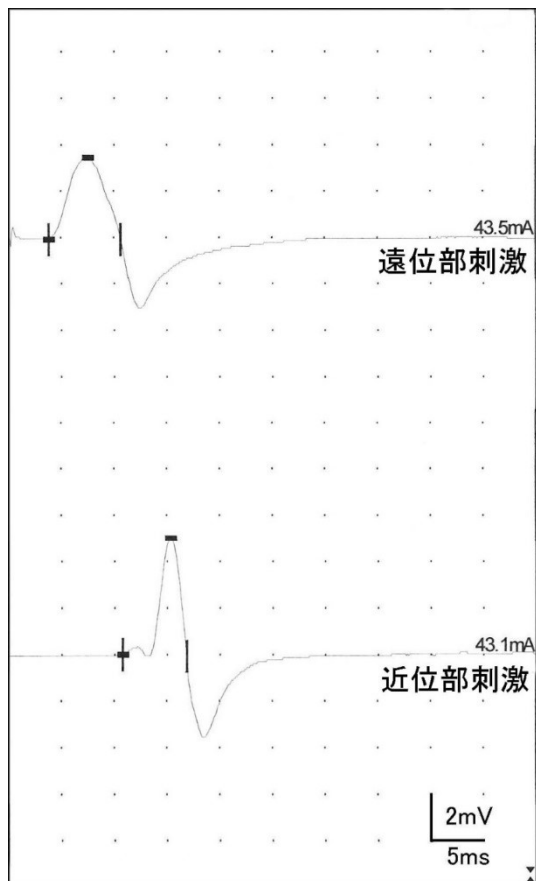


双極導出(冠状および三角双極)



平均電位基準(AV)法

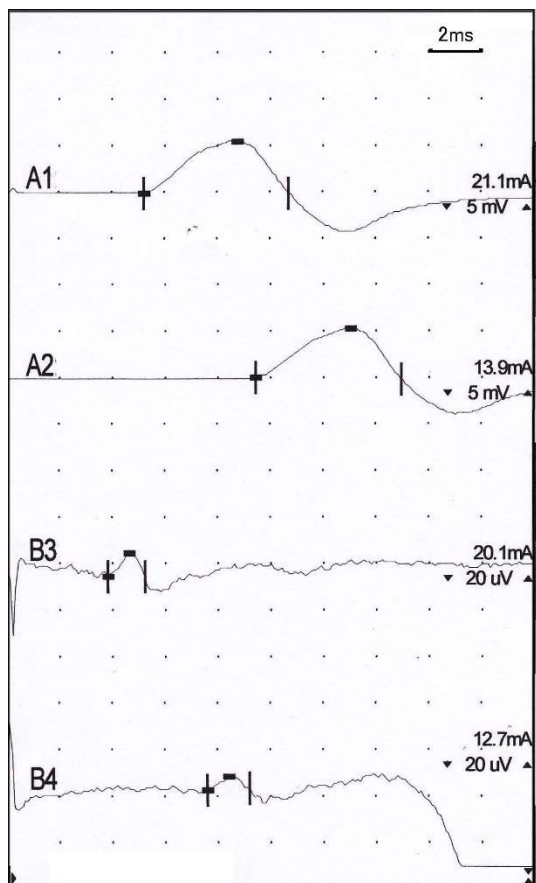
### 設問3.



Recording Site: EDB (短趾伸筋)

	距離 mm	潜時 ms	伝導速度 m/s
EDB-Ankle	60	3.8	
Ankle-Pop	360	6.9	52

### 設問4.



記録部位A: APB (短母指外転筋)

記録部位B: Finger (示指)

刺激部位	潜時 ms	持続時間 ms	振幅 μV
A1: wrist	5.2	5.5	5.64m
A2: Elbow	9.4	5.5	5.30m
B3: wrist	3.8	1.4	10.4u
B4: Elbow	7.6	1.6	5.49u

	距離 mm	潜時 ms	伝導速度 m/s
APB-wrist	70	5.2	
wrist-Elbow	235	4.2	56
Finger-wrist	150	3.8	39
wrist-Elbow	235	3.8	62